

Mulburries

Windsor Court, Corner Hall , Hemel Hempstead, HP3 9AW

Offers in excess of £260,000





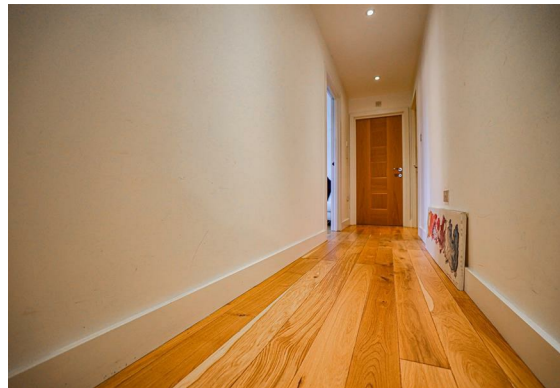
## Windsor Court, Corner Hall, Hemel Hempstead, HP3

9AW

- Two Bedroom - Two Bathroom Second Floor Apartment - Central Town Location
- One Double Bedroom with en-suite
- Single bedroom + family bathroom
- Gas central heating - Wet underfloor heating throughout the apartment
- Modern Fitted Kitchen - Large open plan living area
- Hard wood floors - heating control panels in each room
- Modern throughout
- Lift Access
- One allocated parking space
- Close to Local Amenities , Approximately 1 Mile to Hemel Train Station



Mulburries welcome to the market this charming two-bedroom, two-bathroom apartment located in the heart of Windsor Court, Corner Hall, HP3. Spanning an impressive 667 square feet, this second-floor residence offers a perfect blend of modern living and convenience, making it an ideal choice for both first-time buyers and those looking to downsize.



Upon entering, you will be greeted by a spacious open-plan living area, adorned with elegant hardwood floors that create a warm and inviting atmosphere. The modern fitted kitchen is well-equipped, providing a delightful space for culinary







enthusiasts. The apartment features a generous double bedroom complete with an en-suite bathroom, ensuring privacy and comfort. Additionally, there is a single bedroom that can serve as a guest room or a study, alongside a well-appointed family bathroom.

One of the standout features of this property is the wet underfloor heating system, which provides a cosy warmth throughout the apartment, complemented by heating control panels in each room for your convenience. The apartment also benefits from lift access and an allocated parking space, making it easily accessible and practical for everyday living.



Situated in a central town location, this apartment is just a stone's throw away from local amenities, ensuring that everything you need is within easy reach. For those who commute, Hemel Train Station is approximately one mile away, providing excellent transport links to London and beyond.

In summary, this delightful apartment at Windsor Court offers a modern lifestyle in a prime location, making it a must-see for anyone seeking comfort and convenience in Hemel Hempstead. Don't miss the opportunity to make this lovely property your new home.





Floor Plan

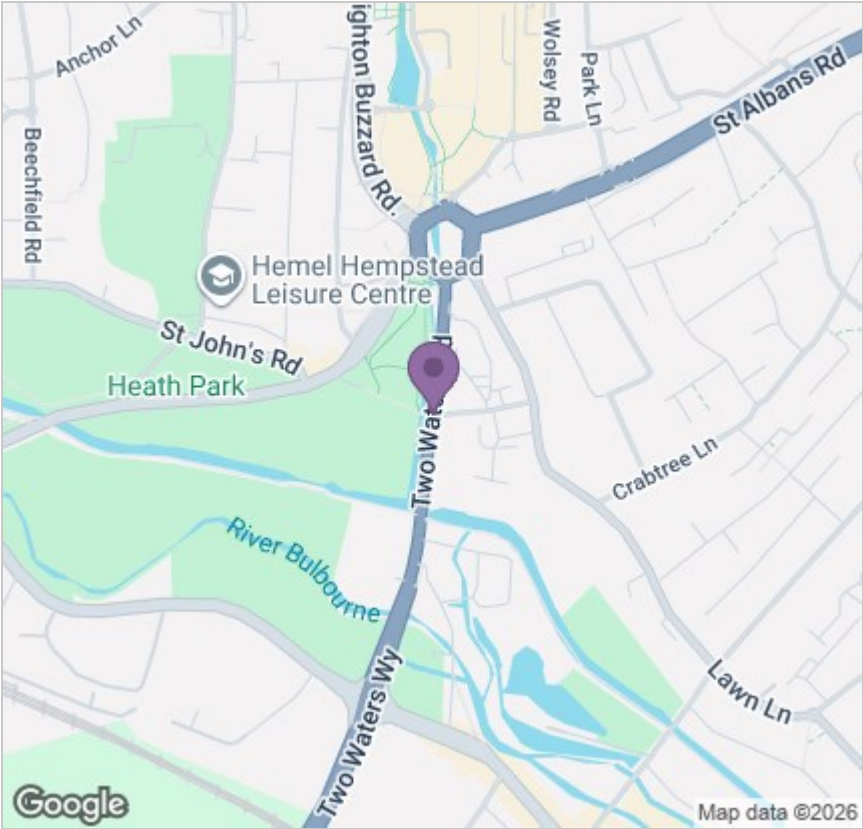


Viewing

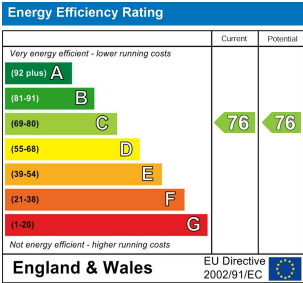
Please contact our Mulburries Office on 01442 732362 if you wish to arrange a viewing appointment for this property or require further information.

31 Lawn Lane, Hemel Hempstead, Hertfordshire, HP3 9HH  
Tel: 01442 732362 Email: [contact@mulburries.co.uk](mailto:contact@mulburries.co.uk) [ryan.green@mulburries.co.uk](mailto:ryan.green@mulburries.co.uk)

Area Map



Energy Efficiency Graph



These particulars, whilst believed to be accurate are set out as a general outline only for guidance and do not constitute any part of an offer or contract. Intending purchasers should not rely on them as statements of representation of fact, but must satisfy themselves by inspection or otherwise as to their accuracy. No person in this firms employment has the authority to make or give any representation or warranty in respect of the property.